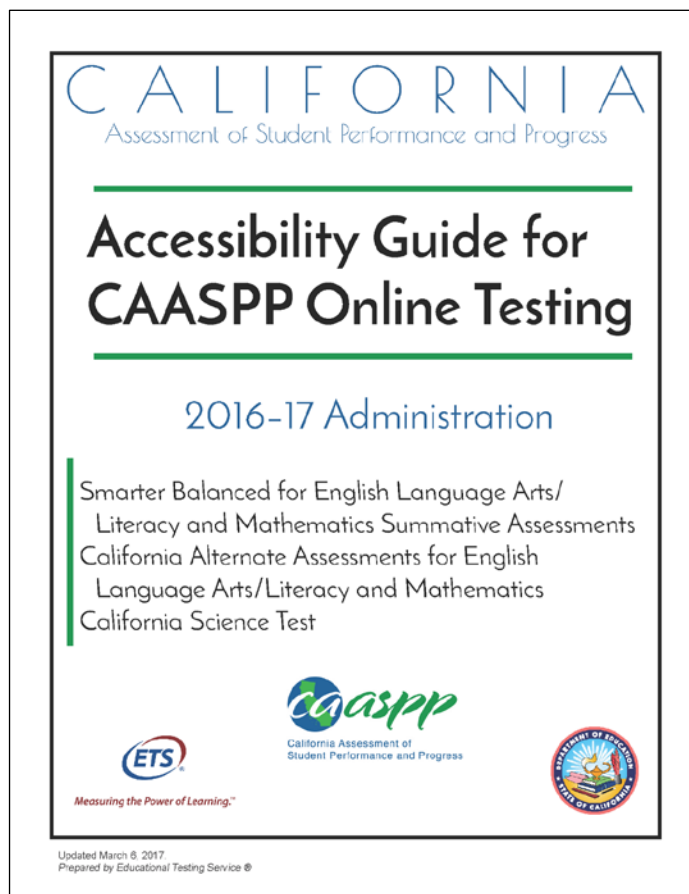

Chapter 2. Configuring Selected Accessibility Supports



Text-to-Speech Requirements

This section contains information about text-to-speech requirements.

Overview of Text-to-Speech

Using text-to-speech requires at least one voice pack to be installed on testing devices.

A number of voice packs are available for testing devices, and all voice packs are researched and tested for compatibility with the secure browsers. Additionally, not all voice packs that come pre-installed with operating systems are approved for use with online testing. The voice packs listed in the operating system subsections have been tested and are whitelisted by the secure browser.

Using Text-to-Speech

Students using text-to-speech for the practice tests must log on using a supported secure browser. Students can also verify that text-to-speech works on their devices by logging on to a practice test session and selecting a test for which text-to-speech is available.



Note: Test sites are strongly encouraged to test the text-to-speech settings before students take operational tests. You can check these settings through the diagnostic page. From the practice test logon screen, select the [Run Diagnostics] link, then select the [TTS Check] button, and then follow the instructions on the page.

How the Secure Browser Selects Voice Packs

This subsection describes how the secure browsers select which voice pack to use.

Voice Pack Selection on Desktop Versions of Secure Browsers

When a student who is using text-to-speech starts a test, the secure browser looks for voice packs on the student's device. Upon recognizing an approved voice pack, the secure browser uses the one with the highest priority.

If any of the approved voice packs has also been set as the default voice on the device, then that voice pack will always get the highest priority.

Voice Pack Selection on Mobile Versions of Secure Browsers

The mobile secure browser uses either the device's native voice pack or a voice pack embedded in the secure browser. Additional voice packs downloaded to a mobile device are not recognized by the mobile secure browser. Table 2 lists the voice packs used by mobile versions of the secure browser.

Table 2. Voice Packs on Mobile Versions of the Secure Browser

| Platform | Voice Pack Used by Secure Browser |
|--------------|-----------------------------------|
| iOS 8.0–10.0 | Native iOS voice pack. |
| Android | Native Android voice pack. |
| Chrome OS | Native Chromebook voice pack. |

About NeoSpeech Voice Packs for Windows

Pursuant to an agreement between NeoSpeech and the American Institutes for Research (the subcontractor providing the online testing systems), authorized users may download and install specific licensed NeoSpeech voice packs for use on supported Windows devices (Windows XP Service Pack 3, Vista, 7, 8.0, 8.1, and 10).

These voice packs can be used instead of the default Windows voice packs for English and the commercial Spanish voice packs from Cepstral. (The default Windows voice packs as well as the Cepstral voice packs for Windows may still be used for text-to-speech, if desired.)

- The Julie voice pack is for English text-to-speech users.
- The Violeta voice pack is for Spanish text-to-speech users.

The NeoSpeech voice pack is to be used only in conjunction with, and not separate from, the online assessments provided by the test delivery system. The NeoSpeech voice packs and the *NeoSpeech Voice Packs Installation Guide* can be downloaded from the Test Operations Management System (TOMS).



Note: You must have a user role assignment that grants you access to TOMS to download this software.

Configuring Windows Text-to-Speech Settings

This section explains how to configure Windows for using text-to-speech with the secure browser. The text-to-speech feature is available on Windows versions as listed in the *System Requirements* document. Using Table 3 as a reference, install voice packs from the indicated packages—these are the supported voice packs.

Windows devices are typically shipped with at least one default voice pack. Many of these default voice packs are recognized by the secure browser.

Table 3. Voice Packs Recognized by Secure Browsers—Windows

| Vendor | Voice Pack | Language |
|-------------------------|----------------|----------|
| Windows (pre-installed) | Julie | English |
| Windows (pre-installed) | Kate | English |
| Windows (pre-installed) | Michael | English |
| Windows (pre-installed) | Michelle | English |
| Windows (pre-installed) | MSAnna | English |
| Windows (pre-installed) | MS_EN-GB_HAZEL | English |
| Windows (pre-installed) | MS_EN-US_DAVID | English |
| Windows (pre-installed) | MS_EN-US_ZIRA | English |
| Windows (pre-installed) | MSMary | English |
| Windows (pre-installed) | MSMike | English |
| Windows (pre-installed) | MSSam | English |
| Windows (pre-installed) | Paul | English |
| Windows (pre-installed) | Violeta | Spanish |
| Cepstral (commercial) | Cepstral_David | English |
| Cepstral (commercial) | Cepstral_Marta | Spanish |

| Vendor | Voice Pack | Language |
|------------------------|-----------------|----------|
| Cepstral (commercial) | Cepstral_Miguel | Spanish |
| NeoSpeech (commercial) | VW Julie | English |
| NeoSpeech (commercial) | VW Violeta | Spanish |

The instructions in this section are for Windows 7. The process is similar for other versions of Windows.

- Open the speech recognition tool in the Control Panel
 - Start menu → Control Panel → Speech Recognition)
 - or
 - Select the [Start] menu, right-click on [Control Panel], select *Open* from the shortcut menu, and then select [Speech Recognition] (Figure 28).

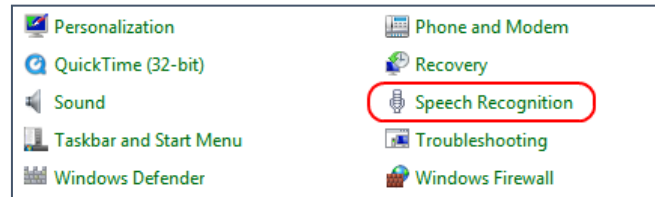


Figure 28. Windows Control Panel window

- In the *Configure your Speech Recognition experience* window, select [Text to Speech] (Figure 29).



Figure 29. Configure your Speech Recognition experience window

3. Select the **[Text to Speech]** tab to configure default text-to-speech preferences (Figure 30).
 - a. *Voice selection:* If multiple voice packs are available, select the default voice.
 - b. Select **[Preview Voice]** to hear a sample of the voice and determine whether the selected voice requires a rate adjustment.
 - c. *Voice speed:* If necessary, adjust the voice speed. Drag the slider to make the voice speak slower or faster. To listen to the rate, select **[Audio Output]**.
4. When you are finished selecting options, select **[OK]** to save your settings and close the Speech Properties window.

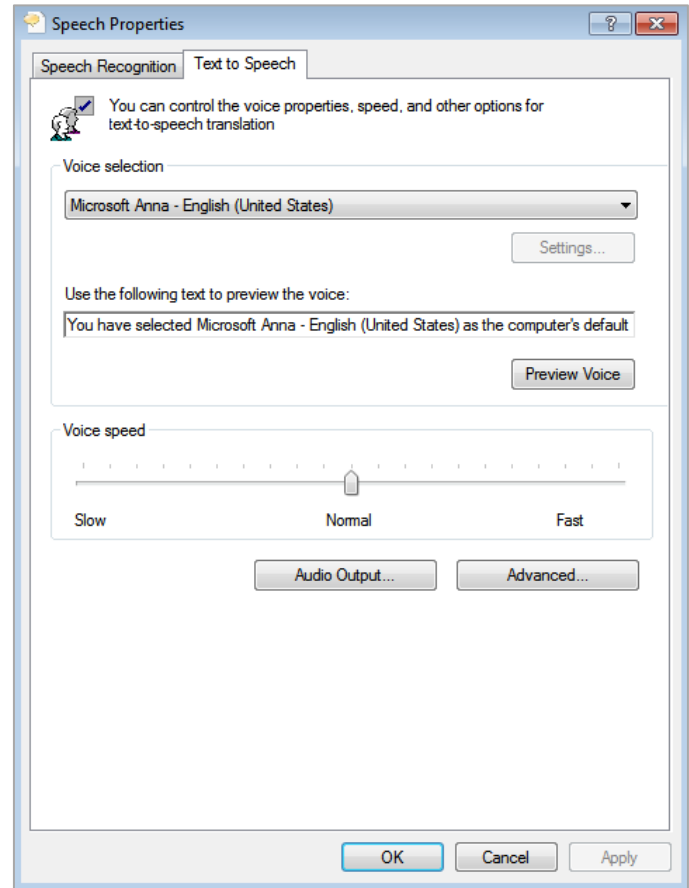


Figure 30. Default text-to-speech preferences in Windows

Configuring OS X Text-to-Speech Settings

This section explains how to configure Mac OS X for using text-to-speech with the secure browser. The text-to-speech feature is available on OS X versions as listed in the *System Requirements* document. Using Table 4 as a reference, install voice packs from the indicated packages—these are the supported voice packs.)

Mac OS X devices are typically shipped with at least one default voice pack. Many of these default voice packs are recognized by the secure browser.

Table 4. Voice Packs Recognized by Secure Browsers—OS X

| Vendor | Voice Pack | Language |
|---------------------|------------|----------|
| Mac (pre-installed) | Agnes | English |
| Mac (pre-installed) | Alex | English |
| Mac (pre-installed) | Bruce | English |
| Mac (pre-installed) | Callie | English |
| Mac (pre-installed) | David | English |
| Mac (pre-installed) | Fred | English |

| Vendor | Voice Pack | Language |
|----------------------|-------------------------|----------|
| Mac (pre-installed) | Jill | English |
| Mac (pre-installed) | Junior | English |
| Mac (pre-installed) | Kathy | English |
| Mac (pre-installed) | Princess | English |
| Mac (pre-installed) | Ralph | English |
| Mac (pre-installed) | Samantha | English |
| Mac (pre-installed) | Tom | Spanish |
| Mac (pre-installed) | Vicki | English |
| Mac (pre-installed) | Victoria | English |
| Mac (pre-installed) | Diego | Spanish |
| Mac (pre-installed) | Javier | Spanish |
| Mac (pre-installed) | Marta | Spanish |
| Mac (pre-installed) | Monica | Spanish |
| Mac (pre-installed) | Paulina | Spanish |
| Infovox (commercial) | Heather Infovox iVox HQ | English |
| Infovox (commercial) | Rosa Infovox iVox HQ | Spanish |

The instructions in this section are for OS X 10.9. The process is similar for other versions of OS X.

1. Choose the *Apple* menu → **System Preferences** (Figure 31).

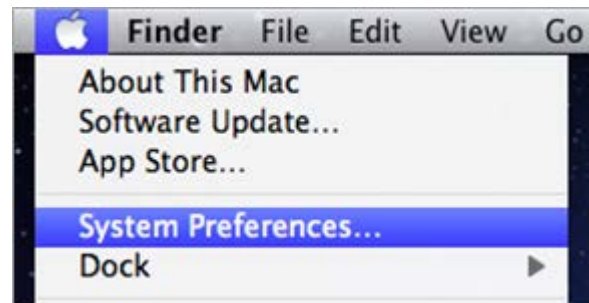


Figure 31. Select OS X System Preferences

2. Select the **[Dictation & Speech]** icon (circled in Figure 32).

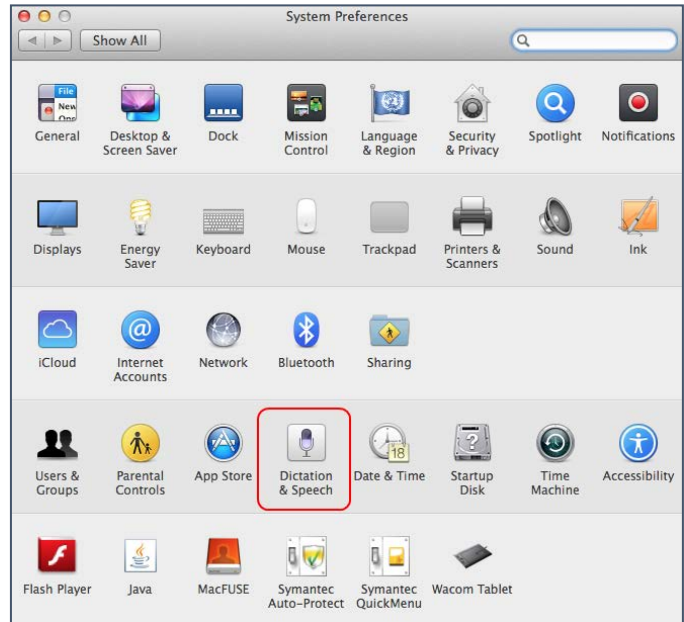


Figure 32. OS X System Preferences

3. In the *Text to Speech* section of the *Dictation & Speech* configuration window (Figure 33), set your default text-to-speech preferences.
 - a. *System Voice*: If multiple voice packs are available, select the default voice.
 - b. Select **[Play]** to hear a sample of the voice and determine whether the selected voice requires a rate adjustment.
 - c. *Speaking Rate*: If necessary, adjust the voice speed. Drag the slider to make the voice speak slower (left) or faster (right). To listen to the rate, select **[Play]**.
 - d. When you are done, select the red **X** or bubble in the upper-left corner to save your settings and close the *Dictation & Speech* window.

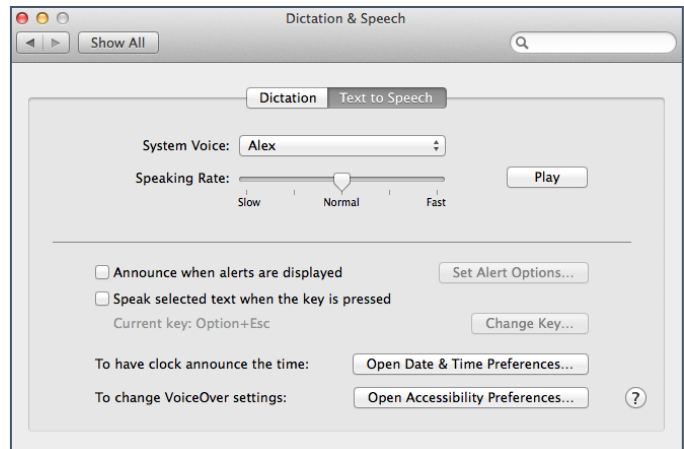


Figure 33. OS X Dictation & Speech options

Configuring Linux Text-to-Speech Settings

This section explains how to install voice packs on the supported Linux distributions. Using Table 5 as a reference, install voice packs from the indicated packages—these are the supported voice packs.

Table 5. Packages that Include Supported Voice Packs on Linux Distributions

| Distribution/Voice Pack | Available in Package |
|---|-------------------------------------|
| Ubuntu | |
| kal_diphone (Kevin American English male) | festvox-kallpc16k, festvox-kallpc8k |
| ked_diphone (Kurt American English male) | festvox-kdlpc16k, festvox-kdlpc8k |
| el_diphone (Castilian Spanish male) | festvox-ellpc11k |
| openSuse | |
| kal_diphone (Kevin American English male) | (included in festival) |
| Fedora, RedHat | |
| cmu_us_awb_arctic_hts (Scottish English male) | festvox-awb-arctic-hts |
| cmu_us_bdl_arctic_hts (American English male) | festvox-bdl-arctic-hts |
| cmu_us_jmk_arctic_hts (Canadian English male) | festvox-jmk-arctic-hts |
| kal_diphone (Kevin American English male) | festvox-kal-diphone |
| ked_diphone (Kurt American English male) | festvox-ked-diphone |

1. Install Festival for text-to-speech:
 - Ubuntu: `sudo apt-get install festival`
 - Fedora, RedHat: `yum install festival`
 - openSUSE: `zypper install festival`
2. Install Sound eXchange (SoX) for text-to-speech:
 - Ubuntu: `sudo apt-get install sox`
 - Fedora, RedHat: `yum install sox`
 - openSUSE: `zypper install festival`

Configuring ZoomText to Recognize the Secure Browser

ZoomText is a magnification and screen reading software that you can use with the secure browser. Use the following procedure to ensure ZoomText recognizes the secure browser.

1. If ZoomText is running, close it.
2. In the Windows Explorer, go to the installation directory for your version of ZoomText. For example, if you have ZoomText version 10.1:
 - Go to C:\Program Files (x86)\ZoomText 10.1\ (Windows 64-bit)
 - Go to C:\Program Files\ZoomText 10.1\ (Windows 32-bit).
3. In a text editor, open the file ZoomTextConfig.xml.
4. Search for line containing the D2DPatch property, similar to the following:

```
<Property name="D2DPatch" value="*,~dwm,~firefox,~thunderbird"/>
```
5. In the value attribute, add “casesecurebrowser” for California’s secure browser:

```
<Property name="D2DPatch" value  
="*,~dwm,~firefox,~casesecurebrowser,~thunderbird"/>
```
6. Save the file, and then restart ZoomText.

Using Permissive Mode

Additional Resources:



- *Technical Specifications and Configuration Guide for California Assessment of Student Performance and Progress (CAASPP) Online Testing*—
<http://www.caaspp.org/rsc/pdfs/CAASPP.tech-specs-and-config-guide.2016-17.pdf>

Permissive mode is a setting that allows students to use accessibility software in addition to the secure browser.

Permissive mode activates when the student is approved for testing. Students who have the Permissive mode setting enabled should not continue with the sign-in process until the accessibility software is configured correctly.

To use accessibility software with the secure browser:

1. Open the required accessibility software.
2. Open the secure browser. Begin the normal sign-in process up to the test administrator/test examiner approval step.
3. When a student is approved for testing, the secure browser allows the operating system's menu and task bar to appear.
4. The student must immediately switch to the accessibility software that is already open on the device so that it appears over the secure browser. The student cannot select (click) within the secure browser until the accessibility software is configured.
 - **Windows:** To switch to the accessibility software application, select the application in the task bar.



Note: When using Windows 8 and above, the task bar remains on-screen throughout the test after enabling accessibility software. However, forbidden applications are still prohibited.

- **Mac:** To switch to the accessibility software application, select the application in the dock.
5. The student configures the accessibility software settings as needed.
 6. After configuring the accessibility software settings, the student returns to the secure browser. At this point, the student can no longer switch back to the accessibility software. If changes need to be made, the student must sign out, make the changes, and then sign in again.
 7. The student continues with the sign-in process.



Notes:

- Permissive Mode is available only for devices running supported desktop Windows and Mac operating systems. For information about supported operating systems, see the [Technical Configuration and Specifications Guide for CAASPP Online Testing](#).
- Accessibility software must be certified for use with the test delivery application.
- Forbidden applications will still not be allowed to run.

This page is left blank intentionally.
